

Research Article

First Record of Two Invasive Eucalypt Psyllid and Aphid (Hemiptera: Psylloidea and Thaumastocoridae) in CRSN/Lwiro, Eastern of the Democratic Republic of Congo

Rubabura K.JA.^{*1}, Bugeme M.D.², Basengere S.G.³, Schmitt A.⁴¹Agricultural Entomology laboratory, Entomology Section, Research Centre in Natural Sciences, Bukavu, South Kivu, Democratic Republic of the Congo²Faculty of Agricultural Sciences, Catholic University of Bukavu and Lubumbashi University, South Kivu and High Katanga, Democratic Republic of the Congo³Aquatic and Terrestrial Ecosystem Section, Research Centre in Natural Sciences, Bukavu, South Kivu, Democratic Republic of the Congo⁴Senior Technical Advisor, Deutsche-Gesellschaft für international Zusammenarbeit (GIZ) GmbH, South Kivu and Maniema Provinces, Democratic Republic of the Congo**Article History**

Received: 04.02.2020

Accepted: 13.02.2020

Published: 29.02.2020

Journal homepage:<http://www.easpublisher.com/easjals/>**Quick Response Code**

Abstract: *Thaumastocoris peregrinus* (Hemiptera, Thaumastocoridae) and *Glycaspis brimblecombei* Moore (Hemiptera, Psylloidea), are eucalyptus pest native to Australia. They were also detected within the main European and North African infested areas. This study, carried out in CRSN/Lwiro, Kabare, South Kivu in eastern of the DRC, aimed to assess the origins and the seasonal incidences of eucalyptus dieback during the two consecutive years 2015 and 2016 dry (March to August or Season B) and rainy seasons (September to February or Season A). Two species are responsible of eucalyptus dieback in CRSN/Lwiro of hemiptera order, *Thaumastocoris peregrinus* Carpintero & Dellapé in Thaumastocoridae family and *Glycaspis brimblecombei* Moore (1964) in Psyllidae family were captured and identified. The number of healthy eucalyptus is very high during the rainy season and the attack of the insect is very high in the dry season and the infested plants and relative abundance of eucalyptus are very high during dry season to compare to rainy period. Near future activity should focus on the question whether the parasitoid and eucalyptus species strength to *G. brimblecombei*, *T. peregrinus* are already present in DRC or should be introduced.

Keywords: Eucalyptus, psyllid, aphid, dieback and CRSN/Lwiro.

Copyright © 2020: This is an open-access article distributed under the terms of the Creative Commons Attribution license which permits unrestricted use, distribution, and reproduction in any medium for non commercial use (NonCommercial, or CC-BY-NC) provided the original author and source are credited.

INTRODUCTION

Eucalypts have been planted around the world for a variety of uses including hardwood, fiber, and fuel or as ornamental trees in urban areas (Ball, 1995). According Brooker (2000), *Eucalyptus* including *Angophora* and *Corymbia* comprise of over 700 species of trees and shrubs, mostly native to Australia. Those authors Withers (2001) and Queiroz *et al.* (2012) demonstrated Eucalypts are widely used because of their significant advantages over other forest tree species mainly because they are relatively pest-free in their new areas. The increasing rates of introduction and establishment of Australian insects has become an important management issue in most eucalypt growing areas. In the last 100 years, fifteen insect species native to Australia and specialists on eucalypts, have been established (Paine, 2000; Queiroz *et al.*, 2012; Burckhardt *et al.*, 2014).

According those authors Floris *et al.* (2018), the most widely cultivated species in Mediterranean basin is the river red gum, *Eucalyptus camaldulensis* Dehnh, followed by *E. globulus* Labill. And *E. gomphocephala* DC. Again, they show that, over the last few decades, a number of phytophagous insects and pathogenic fungi have threatened Eucalyptus species in the Mediterranean area. Among the most recent exotic invasive species, the red gum lerp psyllid, eucalyptus psyllid, and bronze bug have caused extensive damage to eucalypt plantations in consecutive years.

The red gum lerp psyllid was recorded for the first time in Italy in 2010 (Laudonia and Garonna, 2010; Germinara *et al.*, 2011; Frascioni *et al.*, 2013; OEPP, 2014; CABI / OEPP, 2015) and spread rapidly in central and southern regions, including the islands. It was reported for the first time in Sardinia in spring 2010 (Buffa, 2015; EPPO, 2011; EPPO, 2014; CABI / EPPO, 2015). The invasive red gum lerp psyllid, *Glycaspis*

brimblecombei Moore (Hemiptera: Psyllidae), is the most serious Eucalyptus pest in the Mediterranean area (Mendel *et al.*, 2016), especially for *E. camaldulensis*, which has been shown to be extremely susceptible to *G. brimblecombei* infestations (Deidda *et al.*, 2016). The first record of *G. brimblecombei* in Africa was reported as a harmful species since 2010 in Canaries island (Malumphy, 2010; OEPP, 2014 ; CABI / OEPP, 2015) and in 2014 in Tunisia (Attia *et al.*, 2014; Dhahri *et al.*, 2014; CABI / OEPP, 2015), Madagascar and Mauritius (OEPP, 2014; CABI / OEPP, 2015) , in 2013 in Algeria (Reguia *et al.*, 2013; CABI / OEPP, 2015). This harmful specie occurs in Morocco with restricted distribution in 2014 (EPPO, 2014; Messoudi *et al.*, 2014; CABI / EPPO, 2015). Again, it has been reported since 2015 in South Africa (CABI / OEPP, 2015) and in 2017 in Zambia (Chungu *et al.*, 2017) and in 2019 in Ethiopia (Abraham Yirgu *et al.*, 2019).

The bronze bug, *Thaumastocoris peregrinus* Carpintero & Dellapé (Hemiptera: Thaumastocoridae) is a sap-sucking pest infesting eucalyptus plantations. It originates from Australia (Noack and Rose, 2007; Nadel *et al.*, 2010), where it has been reported as a harmful species since 2002. The bronze bug is now widespread in many other areas: Africa (2003) (Zimbabwe, South Africa) (Jacobs and Neser, 2005; Giliomee, 2011), South America (2005) (Uruguay, Paraguay, Brazil, Chile, Argentina) (Carpintero and Dellape, 2006; Noack and Coviella, 2006; Martínez and Bianchi, 2010; Wilcken *et al.*, 2010; Ide *et al.*, 2011; Soliman *et al.*, 2012), Europe (2011), and recently the Middle East (2014) and New Zealand (Sopow *et al.*, 2012). The first report in Europe was recorded in Italy (2011) in the Lazio region (Laudonia and Sasso, 2012), followed by Portugal in 2012 (Garcia *et al.*, 2013), Sicily in 2014 (Suma *et al.*, 2014) and Sardinia in 2015 (Deiana *et al.*, 2018), where the first record was reported in the south of the island on *E. camaldulensis*.

It was recorded for the first time in 2007 in Zimbabwe , since 2008 in Malawi and 2009 in Kenya (Nadel *et al.*, 2010; OEPP, 2014; CABI / OEPP, 2017), in 2014 in Uganda (BiCEP, 2014 ; CABI / OEPP, 2017), in 2016 in Reunion (Streito *et al.*, 2016 ; CABI / OEPP, 2017), in 2017 in Tanzania, Rwanda and Mozambique (CABI / OEPP, 2017).

In eastern of the Republic Democratic of Congo, South Kivu province, Kabare territory at the Research Centre in Natural Sciences (CRSN/Lwiro), field surveys were carried out in eucalyptus plantations in order to assess the origins and the seasonal incidences of eucalyptus dieback during the two consecutive years 2015 and 2016 dry (March to August or Season B) and rainy seasons (September to February or Season A).

MATERIAL AND METHODS

Study Area

The study was conducted at the Research Centre in Natural Sciences (C.R.S.N) in Lwiro. It is based in Lwiro and located at 28°48 'east longitude, 2°15' south latitude on 1750 m of altitude. The choice of the Natural Sciences Research Center (C.R.S.N) and surroundings is nevertheless oriented by the presence of Eucalyptus spp. attacked by insect pests that is the focus of our study. The Center for Research in Natural Sciences (C.R.S.N) is a state research institution, located 40 Km north of Bukavu and 7 Km from the western edge of Lake Kivu, in Kabare, South Kivu in the Democratic Republic of Congo. Kabare is dominated by highland and it has borders with Rwanda and North Kivu province. The annual precipitation average of the study area is 1300 mm with a maximum of 1800 mm and minimum of 800 mm. The average for temperature is annually 19, 5 °C. The soil is of volcanic nature but dominated by clay. Figure 1 below shows the CRSN / Lwiro.

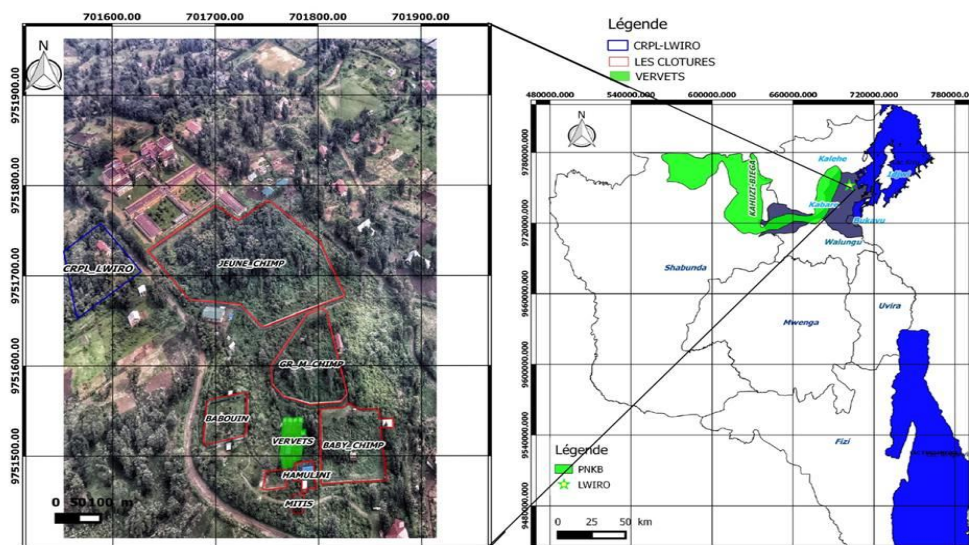


Figure 1. Research Centre in Natural Sciences (CRSN / Lwiro)

Material

The material for this study is eucalypts. According to the APG (Angiosperms Phylogeny Group) scientific classification (Guignard, 2001 cited by Mekelleche, 2015), it belongs to the plant kingdom, Spermatophyte branching, subphylum Angiosperm, class Eudicotes, subclass of Rosidae, the Myrtales order, family Myrtaceae, genus *Eucalyptus* and species *Eucalyptus*.

According Cooper (1983), the genus *Eucalyptus* is one of the most characteristic genera of the Australian flora and contains about 300 species. These trees have economic value due to their use in many sectors. In 1960, the export of eucalyptus seed project was started by the Australian government and the FAO (1980) and a great deal of eucalyptus seeds were introduced into numerous developing countries without any phytosanitary certificate.

Methods

Prospecting of *Eucalyptus* trees

Phytosanitary rounding or phytosanitary prospecting (Dupriez and Simbizi, 1998) was carried out in these associations studied by the quadrat and eucalyptus observation (Dagnelie , 1992) methods.

- **Inventory of the entomofaunal**

The threshing for the harvest of insects living on the foliage and on the branches of *Eucalyptus* trees and collected by hand. Those insects were placed in the plastic bottle and preserved in 96% alcohol, afterwards to the Agricultural Entomology Laboratory of Biology at the Research Center in Natural Sciences, CRSN / Lwiro.

- **Pest insects identification at the laboratory**

The insect pests of *Eucalyptus* were recorded and identified by several specialists (Moore, 1964; Carpintero and Dellapé, 2006; Noack *et al.*, 2011; Soliman *et al.*, 2012; Mutitu *et al.*, 2013; Buffa, 2015; Mendel *et al.*, 2016; Deidda *et al.*, 2016; Floris *et al.*, 2018; Garonna *et al.*, 2018). The sample of pest insect collected in quadrats was observed on microscope for identification in the laboratory by using photography proposed by Noack *et al.*(2011), Messoudi *et al.*(2014), Mendel *et al.*(2016) and Floris *et al.*(2018) and Garonna *et al.*(2018).

Eucalyptus trees observation

Seventeen quadrats selected at random contained 50 *Eucalyptus* were prospected. The direct observation (Dagnelie, 1992) on all vegetative and enumeration of infected plants were used.

Data Processing and Statistical Analyses

The percent of infested plants (% IP) was calculated by the following equation proposed by Harrison, 1984; Urbaneja Garcia, 2000; Diez, 2001; Murúa *et al.*, 2006:

$$\% \text{ IP} = \frac{\text{Infested eucalyptus plants}}{\text{Total eucalyptus plants}} \times 100$$

The formulae of Berger (1980) shown as follows of incidence (% I) and relative abundance (RA) were used for estimations:

$$\% \text{ I} = \frac{\text{No of eucalyptus attacked}}{\text{No total of all eucalyptus of quadrant}} \times 100$$

$$\text{R A} = \frac{\text{Number of eucalyptus attacked}}{\text{Total number of all eucalyptus attacked of all quadrants}} \times 100$$

The Microsoft Office Excel 2010(Curties, 2010) was used to encode data collected. Percent of infested plants, incidence and relative abundance data were angularly transformed and subjected to analysis with the software Past (Hammer *et al.*, 2001). Principal components analysis (PCA) was carried out.

RESULT AND DISCUSSION

Pest insects of eucalypts trees observed on study area

Two species are responsible of eucalyptus dieback in CRSN/Lwiro of hemiptera order, *Thaumastocoris peregrinus* Carpintero & Dellapé in Thaumastocoridae family and *Glycaspis brimblecombei* Moore (1964) in Psyllidae family were captured and identified (Figure 2 and 3).



Figure 2. Effect of the feeding activity of *T. peregrinus* on leaves of *E. Camaldulensis* associated with the red gum lerp psyllid *G. brimblecombei*.



Figure 3. *Glycaspis brimblecombei* and colonies of *G. brimblecombei*

Damage of Those Insects Specimens on Eucalypts

The figure 4 illustrates the foliar discoloration of eucalyptus in the study area from those specimens.

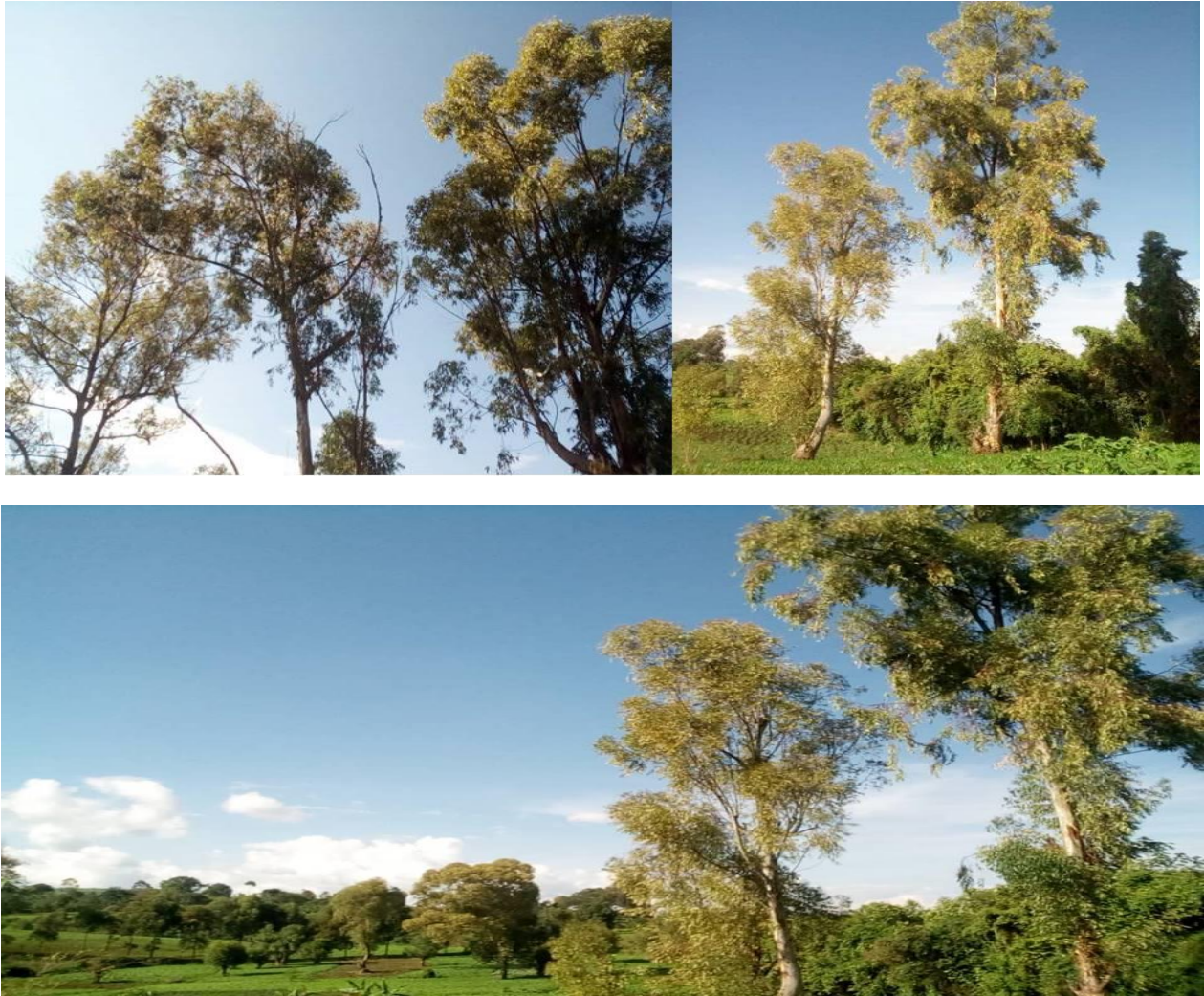


Figure 4. Foliar discoloration of eucalyptus

Pest Importance

The figure 5 presents the PCA scatter diagram which classifies eucalyptus in groups: (5a) the number of healthy eucalyptus is very high during the rainy

season and the attack of the insect is very high in the dry season and (5b) the infested plants and relative abundance of eucalyptus are very high during dry season to compare to rainy period.

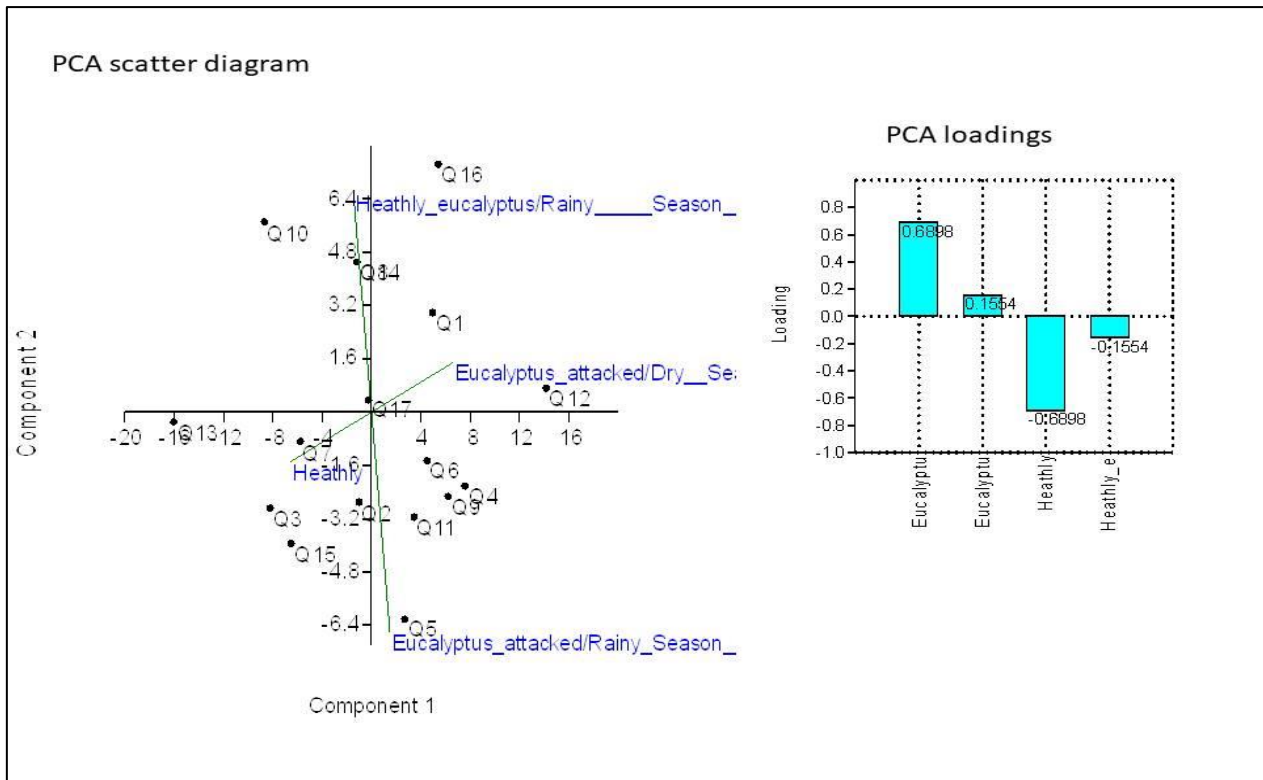


Figure 5 a. PCA scatter diagram and loadings of healthy eucalyptus and attack insect

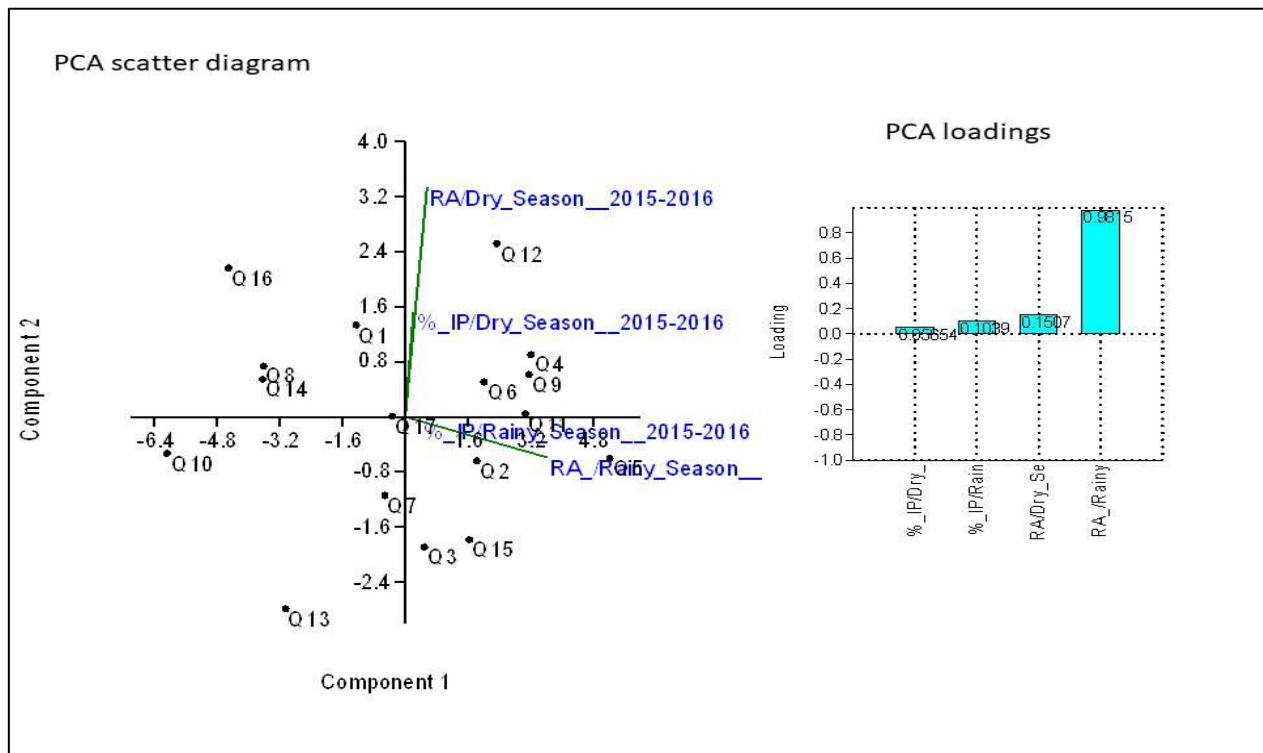


Figure 5b. PCA scatter diagram and loadings of healthy eucalyptus and attack insect

DISCUSSION

Pest Insects Of Eucalypts Trees Observed On Study Area

The *Glycaspis brimblecombei* Moore (1964) and *Thaumastocoris peregrinus* Carpintero & Dellapé

specimens were identified by comparing them with the description given by Noack *et al.*(2011), Mendel *et al.*(2016), Messoudi *et al.*(2014), Floris *et al.*(2018) and Garonna *et al.*(2018) . The Eastern DR Congo, South Kivu, CRSN Lwiro specimens have all body

parts very similar to those in figure 1 in Floris *et al.* (2018) and Garonna *et al.* (2018).

In Australia, it is estimated that about 15,000-20,000 species of phytophagous insects feed on *Eucalyptus* ssp. Some of these pests were accidentally introduced into developing countries during the eucalyptus seed project (Doğanlar and Doğanlar, 2008).

The red gum lerp psyllid (*G. brimblecombei*) are laid eggs on the leaf surface, where nymphs develop under protective white conical coverings (lerps) composed of lipids, proteins and carbohydrates (Morgan, 1984). According Mendel *et al.* (2016) and Cuello *et al.* (2018), adults and nymphs are phloem feeders and produce large amounts of honeydew, thus promoting the development of sooty mold. The bronze bug (*T. peregrinus*) is known to attack at least 30 *Eucalyptus* species and three common commercial hybrids (Jacobs and Naser, 2005; Carpintero and Dellapé, 2006; Noack and Coviella, 2006). *E. urophylla* and *E. grandis* were found to be the most suitable host species, as nymph development was faster and female fecundity higher than on *E. camaldulensis* (Soliman *et al.*, 2012). Adults are light brown in color with darker spots, approximately 3 mm long, with a flattened body. Each female is capable to product about 60 eggs during the life cycle, generally it hatch in 6 days. Eggs are black, elliptical in shape and can be found individually or in patches on leaves and twigs. The life cycle of *T. peregrinus* is 60 days. Nymphs develop through five instars to the adult stage in approximately 20 days, whereas adult longevity ranges from 14 to 42 days (Noack and Rose, 2007; Soliman *et al.*, 2012).

Damage of Those Insects Specimens on Eucalypts

The foliar discoloration of eucalyptus in CRSN/Lwiro study area from those specimens is the same with those observed by those authors Brennan *et al.* (1999, 2001), Daane *et al.* (2005, 2012). The later show that the damage resulting from leaf feeding includes foliar discoloration, and, in cases of heavy infestations, dieback, early leaf fall and reduced plant growth. In fact, defoliation in consecutive years can lead to the death of young plants or susceptible clones (Daane *et al.*, 2005). In addition, the most suitable host species of *G. brimblecombei* are *Eucalyptus blakelyi*, *E. camaldulensis*, *E. dealbata*, *E. tereticornis*, and eventually *E. nitens* in Australia (Moore 1970, 1975). The red gum lerp psyllid is also present at *E. brassiana*, *E. bridgesiana*, *E. camphora* et *E. mannifera subsp. maculosa*. *E. camaldulensis* outside of Australia in California and in United states), *E. diversicolor*, *E. globulus* and *E. sideroxylon* (Brennan *et al.*, 2001) are supplementary host. The later same author lead study to determine the resistance degree cultivated eucalyptus species in California. Several species show more and less high resistance on attack of psyllid, but three species, *E. rudis*, *E. camaldulensis* and *E. tereticornis*, were revealed very susceptibles. According the bronze

bug, it completes multiple generations per year and all life stages can be observed at the same time on leaves. The damage is caused by the feeding punctures of adults and preimaginal stages on expanded leaves, causing silvery chlorosis that evolves to leaf bronzing and drying. The canopy turns progressively to a brownish reddish discoloration, and thus has the common name of “winter bronzing”. In addition to this symptom, early leaf fall and complete defoliation have been observed. Repeated infestations may cause branch dieback, reduce tree growth, and lead to the death of young weak plants (Soliman *et al.*, 2012).

Pest Importance

The number of healthy eucalyptus is very high during the rainy season and the attack of the insect is very high in the dry season. Among the most recent exotic invasive species, the two new eucalypt-feeding psyllid and aphid species in CRSN//Lwiro, *G. brimblecombei* and *T. peregrinus* have caused extensive damage to eucalypt plantations in consecutive years and are known as the more aggressive to trees as it also develops on old leaves (Floris *et al.*, 2018). Resulting in production losses, this psyllid has become a serious pest in the New World (including Brazil, Chile and Peru) causing severe defoliation and some tree mortality (Queiroz *et al.*, 2013). However, it has been noted that the attack of these phloem feeding insects produces large quantities of honeydew, facilitating subsequent cover of the foliage by sooty mold. As time progresses, fungal cover can cause leaf discoloration, falling, stunted growth and general abatement of plant vigour. This general deterioration could facilitate further attacks by other insect pests (Reguia and Peris-Felipo, 2013).

In addition, the studies of Oliveira *et al.* (2012) in their first experimentally show that the rain has regulatory effects on *G. brimblecombei* populations, with an effectiveness of up to 96%. These results corroborate with those obtained by Ramirez *et al.* (2003), who observed that frequent rains contributed to lerp fall, causing a populational decline of the red gum lerp psyllid. According to our results and observations, rainfall has two synergistic effects on *G. brimblecombei*. The first is the effect of leaf wetting, which can lead to the solubilization of the lerp sugars, exposing the nymphs to adverse environmental conditions or predator attack. This proposition is supported by the reduction of the lerp abundance in the “leaf wetting” treatment and direct observations of lerp melting. Furthermore, the increase in humidity may have slower, indirect effects on nymphs, since it can facilitate the occurrence of entomopathogenic fungi.

In fact, Favaro (2006) showed that much of the reduction of this insect population during the rainy season is due to the action of microorganisms. It is possible that the greater water availability for individuals of *E. camaldulensis* during the rainy season

increases the concentration of chemical defenses or decreases the nutrient content in the plant sap, with negative consequences to population of the red gum lerp psyllid (Oliveira *et al.*, 2012) and the bronze bug.

The infested plants and relative abundance of eucalyptus are very high during dry season to compare to rainy period. This result can be explained by temperature because some crop pests are “stop and go” developers in relation to temperature. Thus, they develop more rapidly during periods of time with suitable temperatures. In fact, increased temperatures will accelerate the development of these types of insects possibly resulting in more cycles of generations per year (Awmack *et al.*, 1997). It has been estimated that with a 2°C temperature increase, insects might experience one to five additional life cycles per season (Yamamura and Kiritani, 1998). In addition, those pest insects are native to Australia, which infests plant species belonging to Myrtaceae (Noack *et al.*, 2011). The large number of species and the wide adaptability to different environments make it difficult to generalize the ecological characteristics and potential uses of the species of eucalyptus (Brundu, 2017).

CONCLUSION

Two species of eucalypt-feeding psyllid and aphid, *Glycaspis brimblecombei* and *T. peregrinus*, are reported from CRSN/Lwiro, Kabare, South Kivu in eastern of DRC for the first time. Both originate in Australia and are now established in other areas of the world on commercial and ornamental eucalypt trees. The establishment of these two species in eastern of DRC was not unexpected, considering their rapid colonization in other countries like Zambia and Uganda. The two Hemiptera species in eastern of DRC are likely to spread to other areas in the country and become established as a pest. However, in eastern of DRC, the eucalypts tree, are the most susceptible tree species to both insects. It should therefore be monitored for hemiptera occurrence, together with eucalypt tree species in eastern of DRC. Near future activity should focus on the question whether the parasitoid, native insect pest, map of infested /no infested and eucalyptus species strength to *G. brimblecombei*, *T. peregrinus* and other pest is already present in DRC or should be introduced.

Acknowledgements

We would like to thank all the Authority of Research Centre in Natural Sciences and Researcher of Agriculture Entomology laboratory. Thanks are also due to Agent of Agriculture Entomology laboratory for the collect of psyllid and aphid specimens for this study.

Compliance with Ethical Standards

Conflict of Interest: We declare that there is no conflict of interest with the publication of this manuscript. No human/animal participants were involved in the preparation of this manuscript.

REFERENCES

1. Attia, S. B., & Rapisarda, C. (2014). First record of the red gum lerp psyllid, *Glycaspis brimblecombei* Moore (Hemiptera: Psyllidae), in Tunisia. *Phytoparasitica*, 42(4), 535-539.
2. Awmack, C. S., Woodcock, C. M., & Harrington, R. (1997). Climate change may increase vulnerability of aphids to natural enemies. *Ecological entomology (Print)*, 22(3), 366-368.
3. Ball, J.B. (1995). Development of Eucalyptus plantations – an overview. Proceedings of the Regional Expert Consultation on Eucalyptus, Bangkok, Thailand 4–8 October 1993. I. 15–27
4. Berger, R.D. (1980). Measuring disease intensity. - In: Teng, P. S., S. V. Krupa (eds.): Crop loss assessment, Proc. E. C. Stakman Commem. Symp. Misc. Publ. 7, Agric. Exp. Stn., 28-31.
5. BiCEP. (2014). Biological control of Eucalyptus (BiCEP). www.bicep.net.au
6. Brennan, E. B., Gill, R. J., Hrusa, G. F., & Weinbaum, S. A. (1999). First record of *Glycaspis brimblecombei* (Moore) (Homoptera: Psyllidae) in North America: initial observations and predator associations of a potentially serious new pest of eucalyptus in California. *Pan-Pacific Entomologist*, 75(1), 55-57.
7. Brennan, E. B., Hrusa, G. F., Weinbaum, S. A., & Levison Jr, W. (2001). Resistance of Eucalyptus species to *Glycaspis brimblecombei* (Homoptera: Psyllidae) in the San Francisco Bay area. *Pan-Pacific Entomologist*, 77(4), 249-253.
8. Brooker, M. I. H. (2000). A new classification of the genus *Eucalyptus* L'Her. (Myrtaceae). *Australian Systematic Botany*, 13(1), 79-148.
9. Brundu, G. (2017). Le specie di Eucalyptus introdotte in Italia e in Sardegna. - Atti Convegno “Problematiche fitosanitarie dell’eucalipto”, Tramatz (OR) 24-25 marzo 2017.
10. Buffa, F. (2015). Problematiche entomologiche dell’eucalipto in Sardegna e monitoraggio del fitofago di nuova introduzione *Psylla lerp* (*Glycaspis brimblecombei*). PhD thesis, Department of Agriculture, University of Sassari, Sassari, Italy, pp. 78.
11. Burckhardt, D., Lozada, P. W., & Diaz, B.W. (2008). First record of the red gum lerp psyllid *Glycaspis brimblecombei* (Hemiptera: Psylloidea) from Peru. *Mitteilungen der Schweizerischen Entomologische Gesellschaft*, 81, 83–85.
12. CABI / EPPO, (2015). *Glycaspis brimblecombei*. [Distribution card]. Distribution maps of plant pests, June issue. Wallingford, United Kingdom: CABI, Map 749 (1st Revision).
13. CABI, EPPO, 2017. *Thaumastocoris peregrinus*. [Distribution card]. In: Plant Pest Distribution Maps, (December), Wallingford, UK: CABI. Map 775 (1st Revision).

14. Carpintero, D.L., Dellapé, P.M. (2006). – A new species of *Thaumastocoris* Kirkaldy from Argentina (Heteroptera: Thaumastocoridae: Thaumastocorinae). - *Zootaxa*, 1228, 61-68.
15. Chungu, D., Shakacite, O., Chama, H., Chungu, BC, K. Mbindo, K., & Mulongwe, L. (2017). First record of the red llep gum psyllid, *Glycaspis brimblecombei* Moore (Hemiptera: Psyllidae), in Zambia. *African Journal of Ecology*, 55 (3), 380-382.
16. Cooper, W. (1983). The importance of medicinal plants-wood energy from Australian seeds. Unasylva No. 140. An international journal of forestry and forest industries, 35. Available from <http://www.fao.org/docrep/q1460E/q1460E00.htm>
17. Cuello, E. M., López, S. N., Andorno, A. V., Hernández, C. M., & Botto, E. N. (2018). Development of *Glycaspis brimblecombei* Moore (Hemiptera: Aphalaridae) on *Eucalyptus camaldulensis* Dehn. and *Eucalyptus dunnii* Maiden. *Agricultural and forest entomology*, 20(1), 73-80.
18. Curties D. F. (2010). Microsoft Excel 2010, Paris, Microsoft Press, coll. « Étape par Étape », 368 p.
19. Daane, K. M., Sime, K. R., & Paine, T. D. (2012). Climate and the effectiveness of *Psyllaephagus bliteus* as a parasitoid of the red gum lerp psyllid. *Biocontrol Science and Technology*, 22(11), 1305-1320.
20. Daane, K. M., Sime, K. R., Dahlsten, D. L., Andrews Jr, J. W., & Zuparko, R. L. (2005). The biology of *Psyllaephagus bliteus* Riek (Hymenoptera: Encyrtidae), a parasitoid of the red gum lerp psyllid (Hemiptera: Psylloidea). *Biological Control*, 32(2), 228-235.
21. Dagnelie, P. (1992). Statistique théorique appliquée, tome 1, Presse Agronomique Gembloux, Belgique, p 492.
22. Deiana, V., Pinna, C., Buffa, F., Mannu, R., Satta, A., & Floris, I. (2018). Population dynamics and seasonal abundance of *Thaumastocoris peregrinus* in *Eucalyptus* plantations in Sardinia (Italy). *REDIA-GIORNALE DI ZOOLOGIA*, 101, 101-106.
23. Deidda A., Buffa F., Linaldeddu B.T., Pinna C., Scanu B., Deiana V., Satta A., Franceschini A., Floris I. (2016). Emerging pests and diseases threaten *Eucalyptus camaldulensis* plantations in Sardinia, Italy. - *iForest Biogeosciences and Forestry*, 9: 883-891.
24. Dhahri, S., Jamaa, M. L., Garcia, A., Boavida, C., & Branco, M. (2014). Presença do *Glycaspis brimblecombei* e do parasitoide *Psyllaephagus bliteus* na Tunísia e em Portugal. *Silva Lusitana*, 22(1), 99-105.
25. Diez, P. (2001). Estructura del Complejo de Parasitoides (Hymenoptera) de *Phyllocnistis citrella* Stainton (Lep.: Gracillariidae) Atacando Limoneros en el Departamento Tafí Viejo, Provincia de Tucumán. Tesis de Maestría, Centro Regional de Investigaciones Científicas y Transferencia Tecnológica, Universidad Nacional de La Rioja, Anillaco, La Rioja, Argentina, 100.
26. Doğanlar, O., & Doğanlar, M. (2008). First record of the eucalyptus seed gall wasp, *Quadrastichodella nova* Girault, 1922, (Eulophidae: Tetrastichinae) from Turkey. *Turkish Journal of Zoology*, 32(4), 457-459.
27. Dupriez, H., & Simbizi, J. (1998). Ravageurs aux champs In Carnets écologiques. *Terre et vie*, 13 rue Laurent Delvaux, 1400, Belgique, p 116.
28. EPPO, 2017. PQR - EPPO database on quarantine pests.[online] <http://www.eppo.int>
29. EPPO. (2014). PQR database. Paris, France: European and Mediterranean Plant Protection Organization. Retrieved from <http://www.eppo.int/DATAB/ASES/pqr/pqr.htm> (accessed 20 Sept 18).
30. FAO. (1980). Genetic Resources of Tree Species in Arid and Semi-arid Areas. A survey for the improvement of rural living in Latin America, India and Southwest Asia. FAO, Rome.
31. Favaro, M. R. (2006). Aspectos bionômicos de *Glycaspis brimblecombei* (Moore,1964) (Hemiptera: Psyllidae) e seu controle com fungos entomopatogênicos. Dissertation, Curitiba, Universidade Federal do Paraná, 43 p.
32. Floris, I., Cocco, A., Buffa, F., Mannu, R., & Satta, A. (2018). Insect pests of *Eucalyptus* plantations in Sardinia (Italy). *REDIA-GIORNALE DI ZOOLOGIA*, 101, 61-71.
33. Garcia, A., Figueiredo, E., Valente, C., Monserrat, V. J., & Branco, M. (2013). First record of *Thaumastocoris peregrinus* in Portugal and of the neotropical predator *Hemerobius bolivari* in Europe. *Bulletin of Insectology*, 66(2), 251-256.
34. Garonna A.P., Bernardo U., Gualtieri L., Laudonia S., & Nugnes, F. (2018). The present pest status of *Eucalyptus* Sap-Suckers and Gall wasps in Campania (Italy). *Redia*, 101: 73-79. <http://dx.doi.org/10.19263/REDIA-101.18.10>
35. Giliomee J.H. (2011). Recent establishment of many alien insects in South Africa - a cause for concern. - *African Entomology*, 19: 151-155.
36. Hammer, Ø., Harper, D.A.T., & Ryan, P. D. (2001). PAST: Paleontological Statistics Software Package for Education and Data Analysis. *Palaeontologia Electronica* 4(1), 9pp.
37. Harrison, F.P. (1984). The development of an economic injury level for low populations of fall armyworm (Lepidoptera: Noctuidae) in grain corn. *Florida Entomol*, 67, 335-339.
38. Ide M.S., Ruiz C.G., Sandoval A.C., & Valenzuela J.E. (2011). Detection of *Thaumastocoris peregrinus* (Hemiptera: Thaumastocoridae) associated to *Eucalyptus* spp. in Chile. - *Bosque*, 32, 309-313.
39. Jacobs, D.H., & Naser, S. (2005). *Thaumastocoris australicus* Kirkaldy (Heteroptera: Thaumastocoridae): a new insect arrival in South

- Africa, damaging to *Eucalyptus* trees. -*South African Journal of Science*, 101: 233-236.
40. Laudonia, S., & Garonna, A. P. (2010). The red gum lerp psyllid, *Glycaspis brimblecombei*, a new exotic pest of *Eucalyptus camaldulensis* in Italy. *Bulletin of Insectology*, 63(2), 233-236.
 41. Laudonia, S., & Sasso, R. (2012). The bronze bug *Thaumastocoris peregrinus*: a new insect recorded in Italy, damaging to *Eucalyptus* trees. *Bulletin of Insectology*, 65(1), 89-93.
 42. Malumphy, C. (2010). First record of the red gum lerp psyllid, *Glycaspis brimblecombei* Moore (Hemiptera: Psyllidae), in the Canary Islands. *Entomologist's Monthly Magazine*, 146(1754-59).
 43. Martinez, G., & Bianchi, M. (2010). First record in Uruguay of the bronze bug, *Thaumastocoris peregrinus* Carpintero and Dellappé, 2006 (Heteroptera: Thaumastocoridae). *Agrociencia (Montevideo)*, 14(1), 15-18.
 44. Mekelleche, H. (2015). Contribution à l'étude morphométrique d'*Eucalyptus globulus* Labill. (Myrtacées) dans la région de Tlemcen. Mémoire pour l'obtention du diplôme de master en Ecologie et Environnement. Université ABOUBAKER BELKAID-Tlemcen. 49 p.
 45. Mendel Z., Branco M., & Battisti A., (2016). Invasive Sap-Sucker Insects in the Mediterranean Basin. In: *Insects and Diseases of Mediterranean Forest Systems*, Paine T.D. & Lieutier F. Ed., Springer International Publishing, Switzerland, pp. 261-292.
 46. MESSOUDI, L., ROHI, L., & OUGUAS, Y. (2014). Résultats préliminaires sur le psylle de l'*Eucalyptus* *Glycaspis brimblecombei* Moore (Hemiptera, Psyllidae) dans la région de Marrakech (Maroc). *Bulletin de l'Institut Scientifique, Rabat*, (36), 49-56.
 47. Moore K.M. (1975). The *Glycaspis* spp. (Homoptera,Psyllidae) associated with *Eucalyptus camaldulensis*.*Proceedings of the Linnean Society of New South Wales*,99: 121-128.
 48. Moore, K. M. (1964). Observations on some Australian forest insects: 18. Four new species of *Glycaspis* (Homoptera: Psyllidae) from Queensland. In *Proceedings of the Linnean Society of New South Wales* (Vol. 89, No. 1, pp. 163-6).
 49. Morgan, F.D. (1984). Psylloidea of South Australia. Government of South Australia. Government Printer, South Africa, pp. 136.
 50. Morre, K. M. (1970). Observations on some Australian forest insects. 23. A revision of the genus *Glycaspis* (Homoptera: Psyllidae) with descriptions of seventy-three new species. *Australian Zoologist*, 15(3), 248-342.
 51. Murúa, G., Molina-Ochoa, J.C., & Coviella, C. (2006). Population dynamics of the fall armyworm, *Spodoptera frugiperda* (Lepidoptera: Noctuidae) and its parasitoids in Northwestern Argentina. *Florida Entomologist*, 89(2), 175-182.
 52. Mutitu E.K., Garnas J.R., Hurley B.P., Wingfield M.J.,Harney M., Bush S.J., & Slippers B. (2013). Biology and rearing of *Cleruchoides noackae* (Hymenoptera:Mymaridae), an egg parasitoid for the biological control of *Thaumastocoris peregrinus* (Hemiptera:Thaumastocoridae). - *J. Econ. Entomol.*, 106: 1979-1985.
 53. Nadel, R. L., Slippers, B., Scholes, M. C., Lawson, S. A., Noack, A. E., Wilcken, C. F., ... & Wingfield, M. J. (2010). DNA bar-coding reveals source and patterns of *Thaumastocoris peregrinus* invasions in South Africa and South America. *Biological Invasions*, 12(5), 1067-1077.
 54. Noack A.E., Cassis G., & Rose H.A. (2011). Systematic revision of *Thaumastocoris* Kirkaldy (Hemiptera:Heteroptera: Thaumastocoridae). - *Zootaxa*, 3121:1-60.
 55. Noack, A. E., & Coviella, C. E. (2006). Scientific Note:'*Thaumastocoris australicus*' Kirkaldy (Hemiptera: Thaumastocoridae): First record of this invasive pest of'*Eucalyptus*' in the Americas. *General and Applied Entomology: The Journal of the Entomological Society of New South Wales*, 35, 13.
 56. Noack, A. E., & Rose, H. A. (2007). Life-history of *Thaumastocoris peregrinus* and *Thaumastocoris* sp. in the laboratory with some observations on behaviour. *General and Applied Entomology*, 36, 27-33.
 57. Oliveira, K. N., Jesus, F. M. D., Silva, J. O., Espírito-Santo, M. M. D., & Faria, M. L. (2012). An experimental test of rainfall as a control agent of *Glycaspis brimblecombei* Moore (Hemiptera, Psyllidae) on seedlings of *Eucalyptus camaldulensis* Dehn (Myrtaceae). *Revista Brasileira de Entomologia*, 56(1), 101-105.
 58. Paine, T.D., (2000). UC scientists apply IPM techniques to new eucalyptus pests. *California Agriculture*. 54(6), 8-13.
 59. Queiroz D.L., Burckhardt, D., & Majer, J. (2012). Integrated pest management of eucalypt psyllids (Insecta, Hemiptera, Psylloidea). In: Soloneski, S. (ed.), *Integrated Pest Management and Pest Control – Current and Future Tactics*, ISBN: 978-953-51-0050-8, InTech. Available from: <http://www.intechopen.com/books/integrated-pest-management-and-pestcontrol-current-and-future-tactics/integrated-pest-management-of-eucalypt-psyllids-insecta-hemiptera-psylloidea>
 60. Ramírez, ALG, Mancera, GM, & Guerra-Santos, JJ (2002). Analysis of the effect of environmental conditions on the population fluctuation of the eucalyptus psyllid in the State of Mexico. *Editorial Habana, Cuautitlán Izcalli*
 61. Reguía, K., & Peris-Felipo, F. J. (2013). *Glycaspis brimblecombei* Moore, 1964 (Hemiptera Psyllidae) invasion and new records in the Mediterranean area. *Biodiversity Journal*, 4(4), 501-506.
 62. Soliman, E. P., Wilcken, C. F., Pereira, J. M., Dias, T. K., Zaché, B., Dal Pogetto, M. H., & Barbosa, L.

- R. (2012). Biology of *Thaumastocoris peregrinus* in different eucalyptus species and hybrids. *Phytoparasitica*, 40(3), 223-230.
63. Sopow, S., & George, S. (2012). Bronze bug, *Thaumastocoris peregrinus*: a new eucalyptus pest in New Zealand. *Surveillance (Wellington)*, 39(2), 43-46.
64. Spodek, M., Burekhardt, D., Protasov, A., & Mendel, Z. (2015). First record of two invasive eucalypt psyllids (Hemiptera: Psylloidea) in Israel. *Phytoparasitica*, 43(3), 401-406.
65. Streito, J. C., Matocq, A., Legros, V., Genson, G., Pierre, É., & Pluot-Sigwalt, D. (2016). Report of the invasive species *Thaumastocoris peregrinus* Carpintero & Dellapé, 2006, on Reunion Island (Hemiptera, Heteroptera, Thaumastocoridae). *Bulletin de la Société Entomologique de France*, 121(1), 65-72.
66. Suma, P., Nucifora, S., & Bella, S. (2014). New distribution record of the invasive bronze bug *Thaumastocoris peregrinus* Carpintero and Dellapé (Heteroptera, Thaumastocoridae) in Italy. *EPPO Bulletin*, 44(2), 179-182.
67. Urbaneja-García, A. (2000). *Biología de Cirrospilus sp. Próximo a lyncus* (Hym.: Eulophidae), Ectoparásitoide del Minador de las Hojas de los Cítricos, *Phyllocnistis citrella* Stainton (Lep.: Gracillariidae). *Dinámica e Impacto de los Enemigos Naturales del Minador*. Tesis Doctoral, Escuela Técnica Superior de Ingenieros Agrónomos, Departamento de Producción Vegetal, Universidad Nacional Politécnica de Valencia, Valencia, España, p 150.
68. Wilcken, C., Soliman, E., de Sá, L., Barbosa, L., Dias, T. R., Ferreira-Filho, P., & Oliveira, R. R. (2010). Bronze bug *Thaumastocoris peregrinus* Carpintero and Dellapé (Hemiptera: Thaumastocoridae) on Eucalyptus in Brazil and its distribution. *Journal of Plant Protection Research*, 50(2), 201-205.
69. Withers, T. M. (2001). Colonization of eucalypts in New Zealand by Australian insects. *Austral Ecology*, 26(5), 467-476.
70. Yamamura, K., & Kiritani, K. (1998). A simple method to estimate the potential increase in the number of generations under global warming in temperate zones. *Applied Entomology and Zoology*, 33(2), 289-298.
71. Yirgu, A., & Anjulo, A. (2019). First record of *Glycaspis brimblecombei* Moore (hem.: Psyllidae) on *Eucalyptus camaldulensis* in Ethiopia. *Phytoparasitica*, 47(1), 67-70.