

Case Report

Imaging findings in phyllodes tumors of the breast: about 03 cases

Redouane Roukhsi¹, Hassan Doulhousne ², Salah ben elhend¹, Nabil Hammoun³, Elmehdi A³, Abdelilah Mouhsine³, El Fikri Abelghani ²

¹Radiology service – 3th Military Hospital – Laayoune – Morocco
²Radiology service – 5th Military Hospital – Guelmim – Morocco
³Radiology service – HMA Military Hospital – Marrakech – Morocco

*Corresponding Author
 Redouane Roukhsi

Abstract: Phyllodes tumors are rare breast neoplasms, 1 out of 4 of these tumors are malignant. They’re often hard to tell from fibroadenomas on imaging, or even with certain types of needle biopsies. Breast-conserving surgery (lumpectomy) is the main treatment.

Keywords: Phyllodes tumors – Mammography - Breast ultrasound- MRI.

INTRODUCTION:

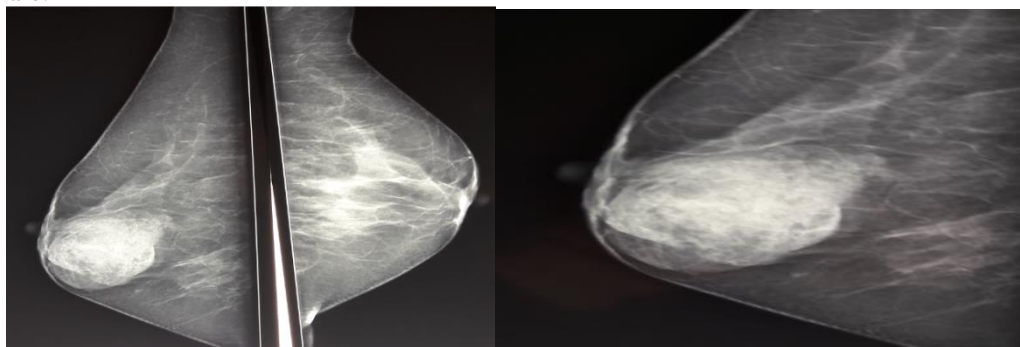
Phyllodes tumor, is a rare fibroepithelial tumor. Mammography and ultrasonography is mainstay of routine imaging of breast lumps. Treatment can be either wide local excision or mastectomy.

Cases Report:

Our 03 patients present with a painless, rapid growing breast mass for which imaging is requested. In our cases ultrasound shows a lobulated solid and lesion with well-defined margins and posterior acoustic enhancement.

	AGE (years)	BREAST	CLINICAL SIGNS	OTHER
Case 1	28	Right	-Painless -Breast mass	Estrogen hormone treatment
Case 2	34	Right	-Painless -Breast mass	History of pulmonary tuberculosis
Case 3	35	Left	-Painless -Breast mass -skin inflammation	Axillary adenopathies left supra centimetric

Mammography: shows a large rounded oval or lobulated, well circumscribed, lesions with smooth margins, with radiolucent halo.



Case 1:

Quick Response Code



Journal homepage:

<http://www.easpublisher.com/easjrit/>

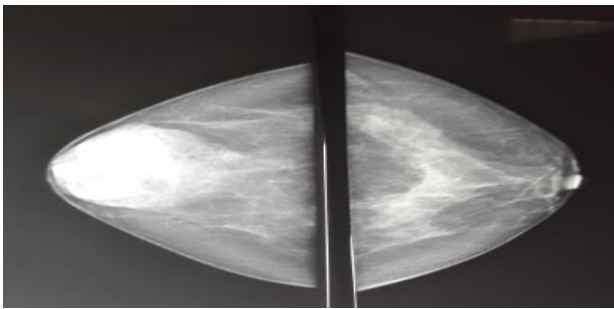
Article History

Received: 15.06.2019

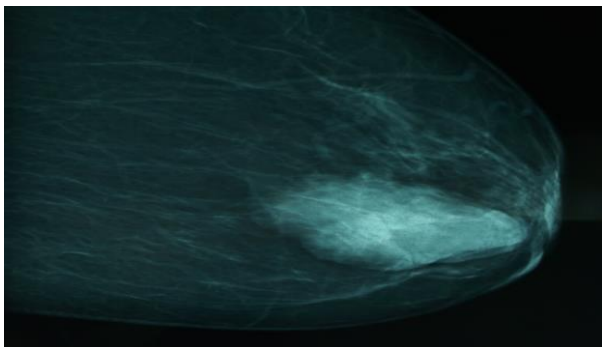
Accepted: 28.06.2019

Published: 10.07.2019

Copyright © 2019: This is an open-access article distributed under the terms of the Creative Commons Attribution license which permits unrestricted use, distribution, and reproduction in any medium for non commercial use (NonCommercial, or CC-BY-NC) provided the original author and source are credited.



Case 2:



Case 3:

Breast Ultrasound: shows a lobulated solid and lesion with well-defined margins and posterior acoustic enhancement.



Case 1:



Case 3:

DISCUSSION:

Phyllodes tumors are rare breast neoplasms representing only 0.3–1% of all breast tumors¹. These tumors may have a similar histopathological appearance and clinical and radiological features to fibroadenoma. In accordance with previous studies, phyllodes tumors were frequently larger than fibroadenomas². Most phyllodes tumors are benign, but about 1 out of 4 of these tumors are malignant.

Mammography shows a non-specific large rounded oval or lobulated, generally well circumscribed, lesions with smooth margins, and radiolucent halo may be present. Calcification may be seen. Ultrasound shows solid-appearing mass, single or multiple, round or cleft like cystic spaces and demonstrating posterior acoustic enhancement. Vascularization is usually present in the solid components.

MRI shows mass with heterogeneous on T2 and showing hyperintense fluid-filled slit-like spaces on T2WI FS and STIR sequences, and rapid initial contrast enhancement on dynamic imaging with no washout³. Breast-conserving surgery (lumpectomy) is the main treatment.

CONCLUSION:

Phyllodes tumors are a fibroepithelial tumor composed of an epithelial and a cellular stromal component. Mammography and ultrasonography is mainstay of routine imaging of breast lumps, show that round or lobulated shape, well-defined margins, heterogeneous internal structure, and non-enhancing internal septations are more common findings in phyllodes tumors than in fibroadenomas.

REFERENCES

1. Rosewell, M.D., Perry, R.R., & Hsju, J.G. (1983). Barranco SC Phyllodes tumors. *Am J Surg*, 165, 376–379.
2. Duman, L., Gezer, N. S., Balçı, P., Altay, C., Başara, I., Durak, M. G., & Sevinç, A. İ. (2016). Differentiation between phyllodes tumors and fibroadenomas based on mammographic sonographic and MRI features. *Breast Care*, 11(2), 123-127.
3. Balaji, R., & Ramachandran, K. N. (2009). Magnetic resonance imaging of a benign phyllodes tumor of the breast. *Breast Care*, 4(3), 189-191.